



# GAT MONTHLY MEMBERSHIP PROGRESS REPORT

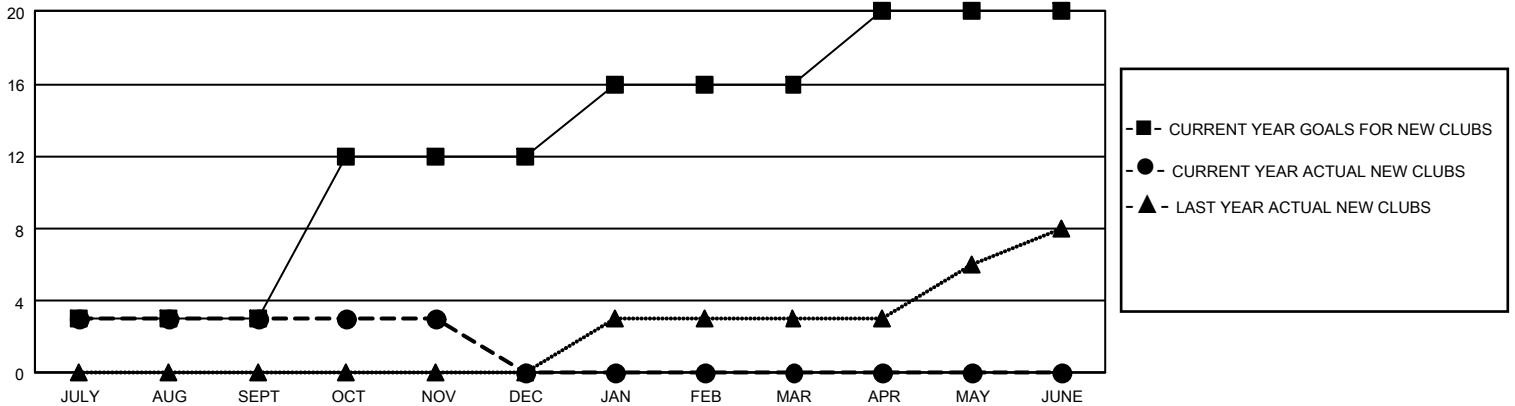
Results as of: 11/30/2025

## GMT Constitutional Area 2, Group B

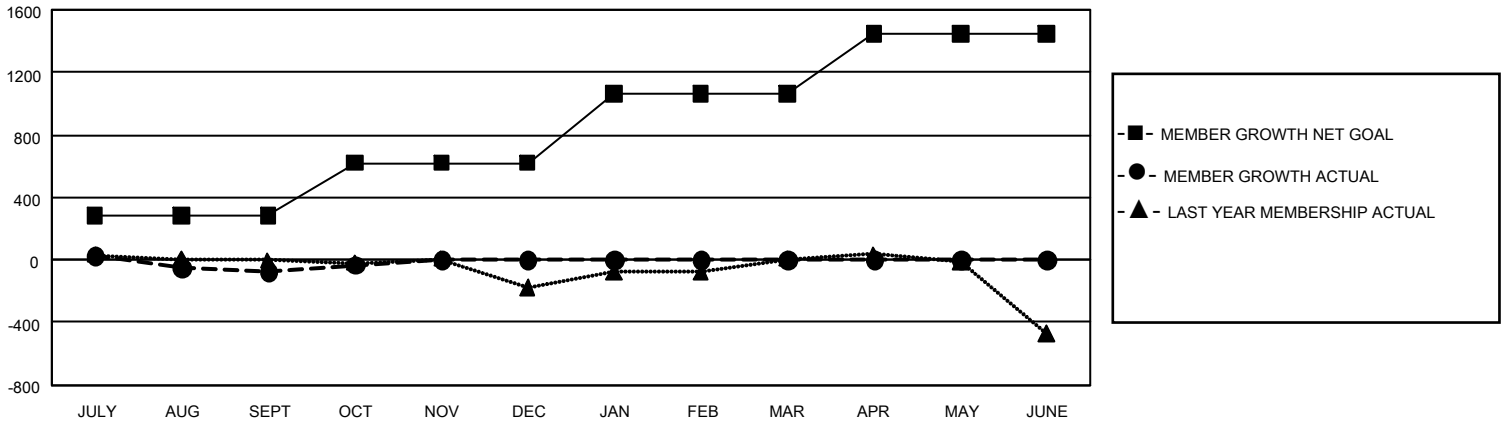
REPORT DOES NOT INCLUDE CLUBS IN UNDISTRICTED AREAS.

Clubs				Members			
RESULTS FOR 2025-2026				RESULTS FOR 2025-2026			
QUARTER	NEW CLUB GOAL	NEW CLUBS	DROPPED CLUBS	QUARTER	MEMBER GROWTH NET GOAL	MEMBER GROWTH ACTUAL	DROPPED MEMBERS ACTUAL (including transfers)
JULY/AUG/SEPT	9	3	2	JULY/AUG/SEPT	281	466	449
OCT/NOV/DEC	27	0	2	OCT/NOV/DEC	339	483	329
JAN/FEB/MAR	12	0	0	JAN/FEB/MAR	441	0	0
APR/MAY/JUNE	12	0	0	APR/MAY/JUNE	385	0	0

GOALS AND ACTUAL NEW CLUBS CUMULATIVE



GOALS AND ACTUAL MEMBERS CUMULATIVE



DROPPED CLUBS: 4

281 CLUBS OF 675 ADDED 1 OR MORE NEW MEMBERS

### GENDER DISTRIBUTION

MALE	9,496 (60.30%)
FEMALE	6,240 (39.63%)
NON BINARY	3 (0.02%)
PREFER NOT TO ANSWER	8 (0.05%)

### DROPPED MEMBERS

DECEASED	101
CLUB CANCELLED	17
OTHER	653
<b>TOTAL</b>	<b>771</b>

[CLICK HERE FOR CUMULATIVE MEMBERSHIP DATA](#)

TOTAL FAMILY UNIT MEMBERS 2,860

FAMILY MEMBERS PAYING HALF DUES 1,477